



## ADVANCED MISSION PLANNING SYSTEMS

PROVIDING TOTAL MISSION PLANNING AND SUPPORT  
FOR ALL AIRCRAFT TYPES AND ROLES

/// FACT SHEET

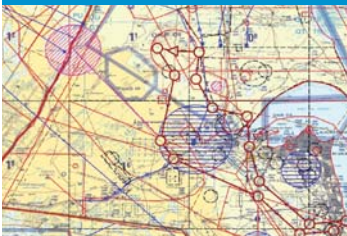


EDS has developed AMPA, a family of mission planning systems which is a modular system easily extended to suit new aircraft types.

### AIRCRAFT CURRENTLY SUPPORTED INCLUDE:

- Tornado GR4
- Harrier GR7/GR9
- Hercules C-130K/C-130J
- Hawk
- Sea King Mk7
- Puma
- Chinook
- Lynx
- Merlin Mk3
- Typhoon

### AIRSPACE COORDINATION ORDER PARSING



### ROUTE PLANNING



### AMPA

EDS' Air Systems division includes a family of Mission Planning systems that offer total mission planning support to enhance the efficiency, speed and accuracy of planning for single or multi-aircraft missions from either main base or deployed sites. The AMPA systems normally operate in a networked manner with access to a communications system linking bases and deployed units. This allows the sharing of data and mission plans, allowing connectivity with other C2 systems. The system can also operate, without degrading its performance, as a stand-alone system without links to external sources.

EDS has developed a Common Mission Planning Software core that is used as the basis for specific Mission Planning Systems. The benefit of this approach is that development within the core software can be shared by all aircraft types thereby significantly reducing costs.

By building aircraft specific features on top of the core software, EDS can customise Mission Planning systems for various aircraft types.

AMPA core system provision includes: mapping, imagery and DTED data; automatic route generation; fuel calculations using ODM and aircraft stores' fit information; threat exposure assessment; calculation and display of intervisibility plots; formation flight planning; weapon and payload delivery calculations and display of profiles; aircraft deconfliction; 2D and 3-D mission rehearsal; 3-D target assessment; automatic display of the ACO and NOTAMS.

### Future Developments

Although the system has years of in-service use, its functionality is continually updated to meet users' needs in changing operational environments. Recent changes and future developments include a complete refresh of the hardware and future developments include 3D mission briefing, virtual target generation and integration of a Link 16 Initialisation Data Preparation Facility (IDPF).

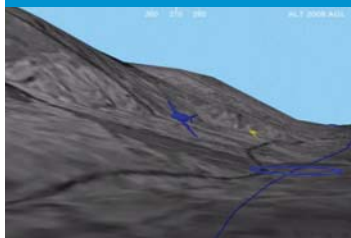
## WEAPON PLANNING



## SENSOR SIMULATION



## MISSION REHEARSAL



## MISSION DEBRIEF



## POINT OF CONTACT

Stu Hulley  
Mission Systems  
T: +44 (0)1256 742404  
F: +44 (0)1256 742612  
M: +44 (0)7966 827330  
E: [stu.hulley@eds.com](mailto:stu.hulley@eds.com)

## TAMPA

The Tornado Advanced Mission Planning Aid has been in service with the RAF since 1999 and has been deployed worldwide, including operational service in the Middle East. TAMPA is being developed under a phased programme that allows feedback from the users to influence the future design of the system. TAMPA supports Storm Shadow, RAPTOR, Brimstone, ALARM and the in-service laser guided bombs and designation pods.

## HAMPA

The Harrier Advanced Mission Planning Aid was delivered to the RAF in 1996 and has undergone significant enhancements since that time including, most recently, the capability to plan use of the Paveway IV Precision Guided Bomb (PGB). It has been used to support operations in the Balkans and in the Middle East.

## JAMPA

EDS has delivered JAMPA to support the C-130 in its tactical role. JAMPA offers a similar capability to that provided by TAMPA and HAMPA, but is modified to align with the tactical roles, such as troop insertion, low altitude supply drops, Search and Rescue (SAR) planning etc. which the C-130 undertakes.

## AMPA Tablet

EDS has developed a tablet based version of AMPA that can be used on board an aircraft. This, when connected to a GPS, provides a cost-effective way of providing a moving map display and full situational awareness as well as complete AMPA functionality to crews whilst airborne.

## Rotary Wing AMPA (RW AMPA)

Functionality to support Rotary-Wing platforms is available and is operational with the Sea King ASaC and JHC Battlefield Helicopters where it recently served alongside the fast jet system in Iraq and Kuwait. RW AMPA has been deployed operationally using both networked and point-to-point communications.

## Hawk AMPA

This version of AMPA provides mission planning support and the ability to upload and download information from an on-board GPS system. This provides route information to the pilot and enables the replay of the sortie post landing for debriefing.

### Contact

EDS Defence, 1-3 Bartley Wood Business Park  
Bartley Way, Hook, Hampshire RG27 9XA  
phone: +44 (0)1256 742000  
fax: +44 (0)1256 742612  
visit: [www.edsdefence.com](http://www.edsdefence.com)  
visit: [www.eds.com](http://www.eds.com)



EXPERTISE. ANSWERS. RESULTS.