



OPERATIONAL ANALYSIS AND MODELLING

EDS IS A LEADING SERVICE SUPPLIER OF SIMULATION AND WARGAMING MODELS SPANNING THE WHOLE SPECTRUM OF MILITARY OPERATIONS

/// FACT SHEET



EDS provides an OA and modelling service that provides a comprehensive range of simulation and wargaming models supported by domain experience and a thorough understanding of the broader acquisition issues.

FEATURES

- Customer-centric
- Domain and acquisition expertise
- Suite of models - campaign to company level
- Full range of modelling services

Overview

In support of OA conducted for the UK MoD, EDS Defence Consulting delivers services that encompass the development, maintenance and operation of a suite of simulations and wargames. These include the setting up and running of scenarios and models for studies and war-gaming, investigating model behaviour, software model specification, development, maintenance and troubleshooting.

Models Supported

CLARION

Combined Land Air Representation of Integrated Operations - represents two sided Land-Air conflicts at theatre level. The model is a computer-based aggregated simulation which represents land units down to battlegroup level and air units down to squadron level. It has been used to conduct a variety of studies supporting capability management, force development and ISTAR, communications & CBRN projects.

COMAND

C3-Orientated Model of Air and Naval Domains - represents air and naval operations at campaign level and is used to conduct studies to support capability management and force development. It is stochastic and reduces the effects of structural variance exhibited in complex simulations.

DIAMOND

Diplomatic And Military Operations in a Non-warfighting Domain - represents a range of activities which may be encountered during Operations Other Than War and is used to investigate campaign level issues at a highly aggregated multi-party level.

BENEFITS

- OA experience readily exploitable into other lines of development and acquisition lifecycle
- Realistic appreciation of the customer domain
- Responsive Flexible Evidence based output with structured and quantifiable measures
- Application of appropriate modelling techniques

POINTS OF CONTACT

If you have a requirement for OA modelling, or if you require further information, please contact:

Damian Crockford
Business Relationship Manager
T: +44 (0)7825 119522
E: damian.crockford@eds.com

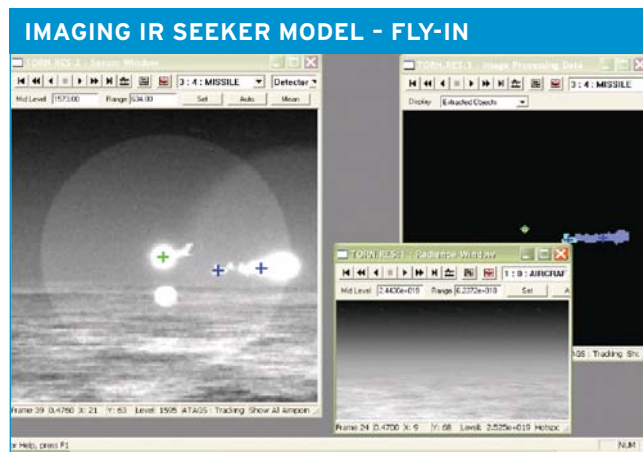
David Wrigley
Research Support
T: +44 (0)1252 818185
E: david.wrigley@edl.uk.eds.com

SIMMAIR

EDS Defence Consulting is part of the consortium developing the new Maritime Air model, SIMMAIR, for Dstl. Our involvement focuses on the C4I elements of the model.

Fly In

The Fly-in model represents an engagement between an aircraft and a missile with an imaging IR seeker. The model can generate images as seen by the missile seeker or a Missile Approach Warner on the aircraft, and these images are continuously updated during the process of the engagement. The model was developed by EDS under contract to Dstl, is implemented in Visual C++ and runs under Windows.



Contact

EDS Defence, 1-3 Bartley Wood Business Park
Bartley Way, Hook, Hampshire RG27 9XA
phone: +44 (0)1256 742000
fax: +44 (0)1256 742612
visit: www.edsdefence.com
visit: www.eds.com



EXPERTISE. ANSWERS. RESULTS.