



TACTICAL DATA LINK NETWORK DESIGN STATION

PLANNING AND DESIGN OF JTIDS/MIDS NETWORKS

/// FACT SHEET

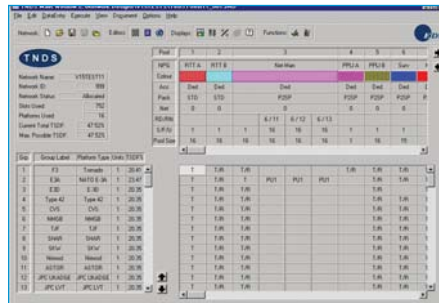


The TNDS provides an intuitive interface that allows rapid conversion of JTIDS/MIDS Information Exchange Requirements (IERs) into validated and efficiently allocated Network Designs. TNDS is the preferred Network Design tool of the UK Joint Data Link Management Organisation (JDLMO), the SHAPE Tactical Data Link Management Section (TDLMS) and the Network Design Cells of a number of European nations.

BENEFITS

- A total solution for JTIDS/MIDS network design and planning
- Rapid conversion of IERs into a validated and efficiently allocated network design
- Automated documentation reducing the workload of designers
- NETMAN T/1 support provides Interoperability between nations
- User configurable to support different national requirements

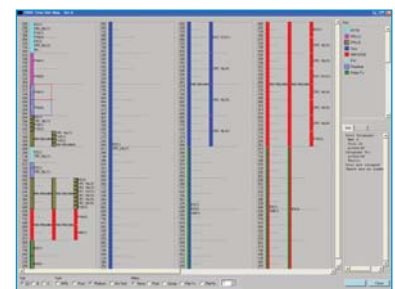
RAPID PRODUCTION OF NETWORK DESIGNS



Data entry is based around a Connectivity Matrix which allows the specification of Network Participants, time slot pools and transmit, receive and relay connectivity requirements. Network requirements are validated for consistency and compliance with known terminal capabilities. Network requirements can also be validated

against user configurable frequency clearance criteria. Validated network requirements are then converted into a series of timeslot blocks using a highly efficient algorithm unique to the TNDS and allocated to individual network participants in accordance with their stated connectivity requirements.

A wide range of displays are provided to allow allocated networks to be viewed in a number of different ways including Network Timeline and Time Slot Map displays familiar to Network Designers worldwide. Once the design is complete, network initialisation data can be generated in a range of terminal and platform specific formats.



FEATURES

- Dynamic Connectivity Matrix
- Network Validation
- Time Slot Block Allocation
- Initialisation data generation
- On-line network displays
- NETMAN T/1 Import/Export
- Auto document production
- Geographic Planning Interface
- TSDF and LOS determination

POINTS OF CONTACT

If you have a requirement for either a Network Design tool or Network Design consulting support, we'd welcome your call.

If you require any further information, we are happy to discuss your needs and our capabilities.

Paul Fedoroff

Business Development Manager

T: +44 (0)1256 742404

M: +44(0) 07790 494520

E: paul.fedoroff@eds.com

Matt Johnston

TDL Business Development Manager

T: +44 (0)1256 742533

F: +44 (0)1256 742511

M: +44 (0)7825 116141

E: matt.johnston@eds.com

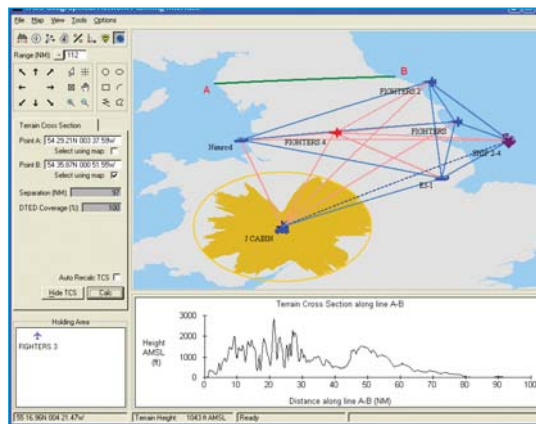
AUTOMATED DOCUMENTATION GENERATION REDUCES OPERATOR WORKLOAD

TNDS allows the semi-automatic production of documentation in support of a network design by interfacing into the MS Word and Excel API. Connectivity Matrix, Timeline and Time Slot Maps are generated as Excel documents with full network descriptions (including platform timeslot block allocations) and TSDF summaries available as Word documents. Resulting documents can be customised if required.

INTERNATIONAL APPLICATION

TNDS allows the import and export of Network Designs using the International NETMAN T/1 format. A rules based editor allows international networks to be validated and modified during the import process to ensure compatibility with local requirements.

OPERATIONAL PLAN VALIDATION



The TNDS incorporates a Geographic Network Planning Interface (GeoNPI), built using the EDS GeoWare Mapping software. This allows the determination of theoretical network connectivity based on Line of Sight and the calculation of area based TSDF using a range of user selectable algorithms and based on predicted platform

operating locations. TNDS supports the use of NATO VMAP, DTED and DAFIF as standard with other map formats supportable if required.

USER CONFIGURABLE TO SUPPORT NATIONAL REQUIREMENTS

TNDS has been designed with flexibility in mind and is user configurable in a number of areas to support specific National requirements, in particular in relation to Frequency Clearance and platform / terminal initialisation data generation.

Contact

EDS Defence, 1-3 Bartley Wood Business Park
Bartley Way, Hook, Hampshire RG27 9XA
phone: +44 (0)1256 742000
fax: +44 (0)1256 742612
visit: www.edsdefence.com
visit: www.eds.com



EXPERTISE. ANSWERS. RESULTS.